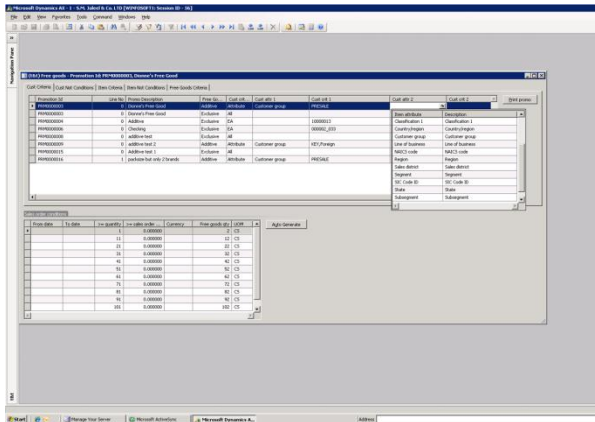


## Pricing and Promotions

### Winfosoft Industry Solutions



The above form shows the attribute based promotion rules for pricing and promotions.

The Consumer Goods landscape is undergoing tremendous changes. Retail behemoths like Wal\*Mart are dictating major compliance requirements that are causing waves throughout the industry. To meet these new demands, Consumer Goods & Food and Beverages Companies must manage Promotions to:

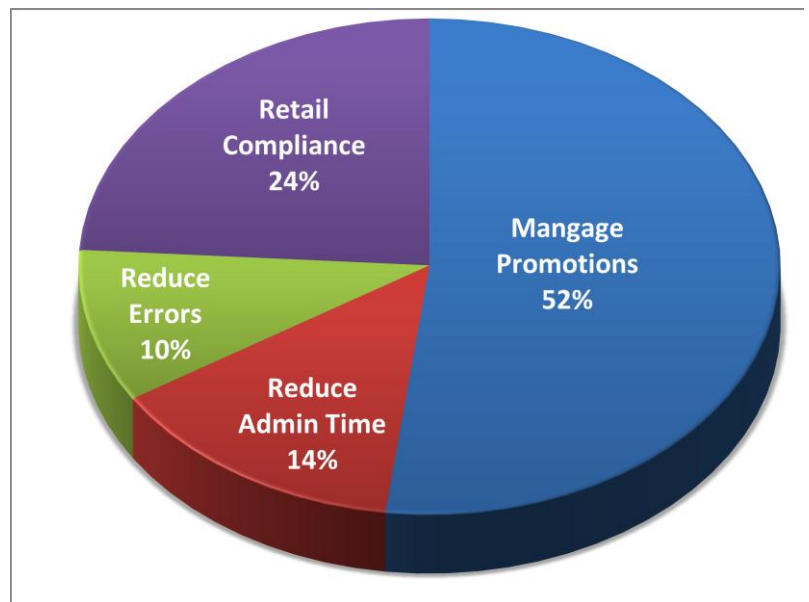
- Increase Market Share
- Push Inventory through the Channel
- Reduce Pricing Error Fees and be Retail Compliant

### Winfosoft Contact Information

[info@winfosoft.com](mailto:info@winfosoft.com)  
717-428-1233  
[www.winfosoft.com](http://www.winfosoft.com)

### The Value of Winfosoft Pricing and Promotions

Major Retail Chains are demanding accurate and timely pricing based upon promotions. The major benefits of Pricing and Promotions are:



### Key Features of Winfosoft's Pricing and Promotions

- Pricing or Discounts based on Customer User Defined Attributes such as Channel, Sales Location, and Segment etc.
- Pricing or Discounts based on Item User Defined Attributes such as Brand, Pack Size, Flavor etc.
- Pricing or Discounts based on Sales Order Quantities
- Pricing or Discounts based on Sales Order Amounts
- Exclusion of Customers or Items available for Promotions based on User Defined Customer and Item Attributes
- Free Goods calculation based on Item and Customer Attributes
- Off Invoice Pricing Accruals
- Table Driven Promotion Rules
- Promotion Analysis